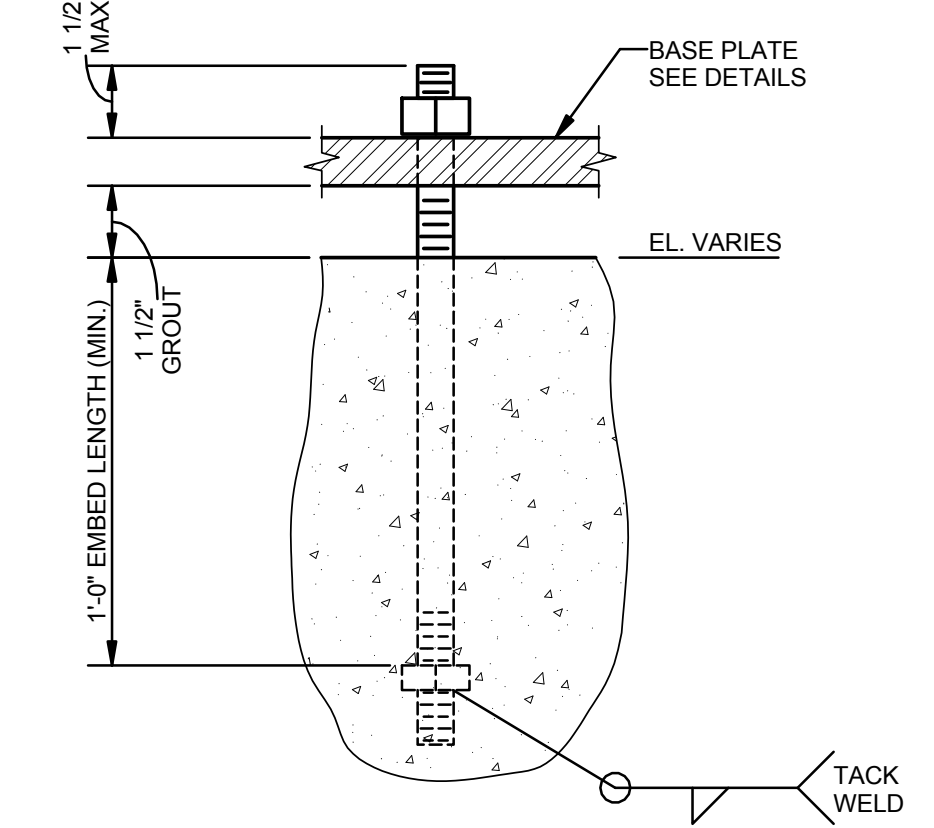
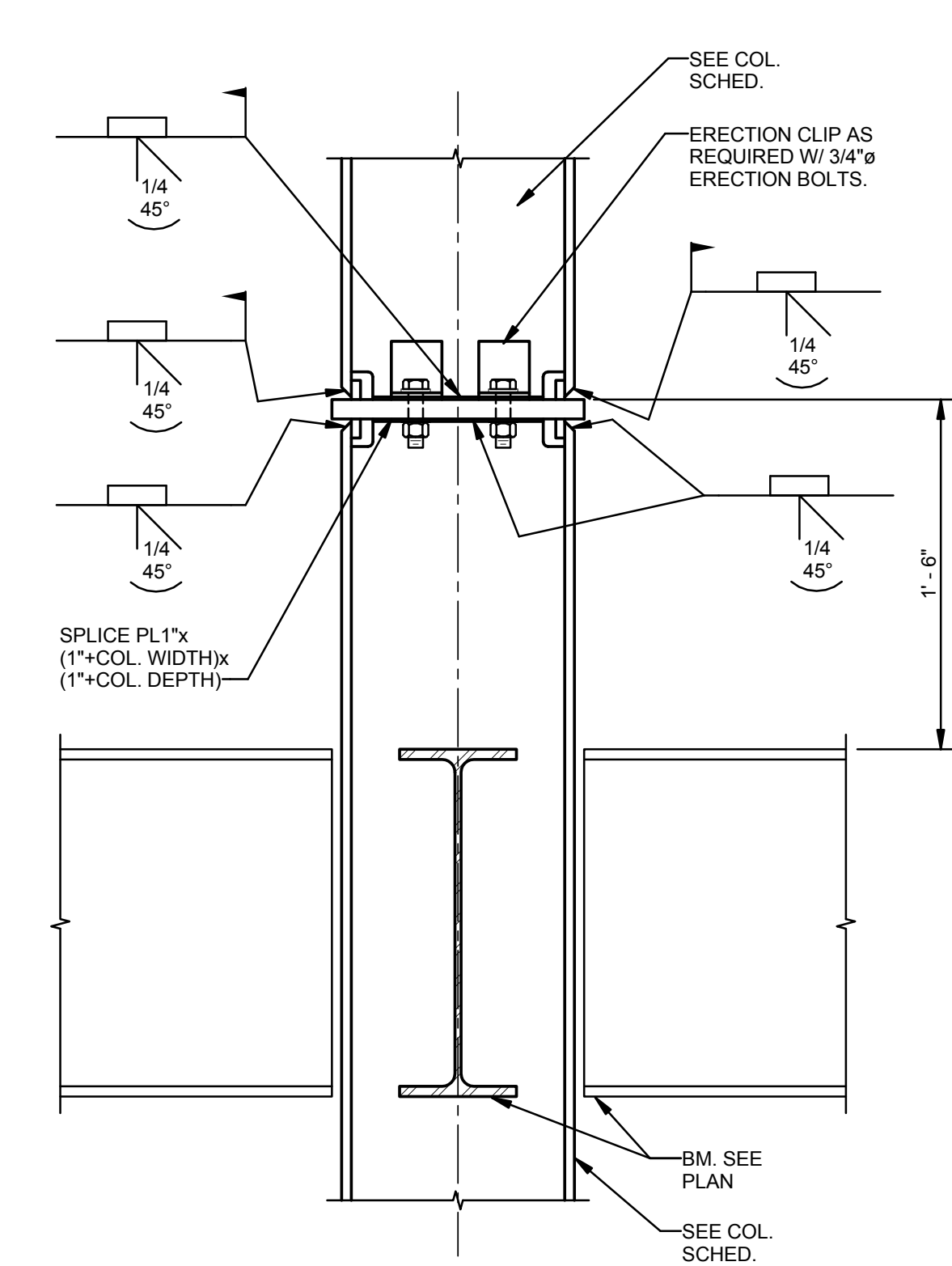
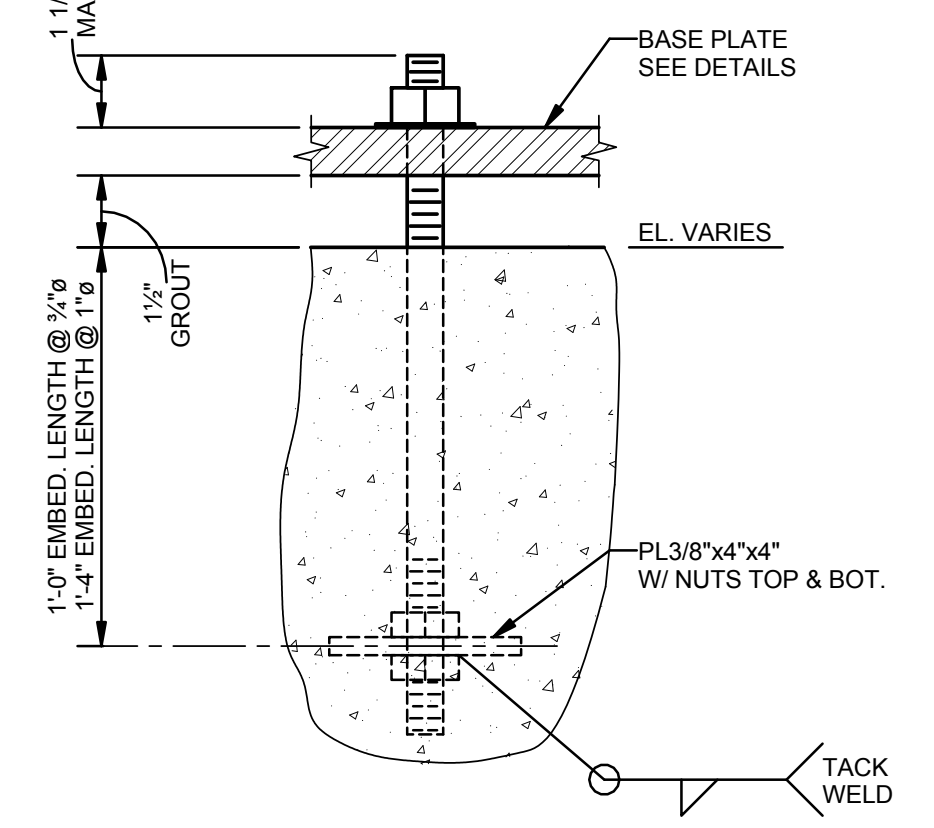


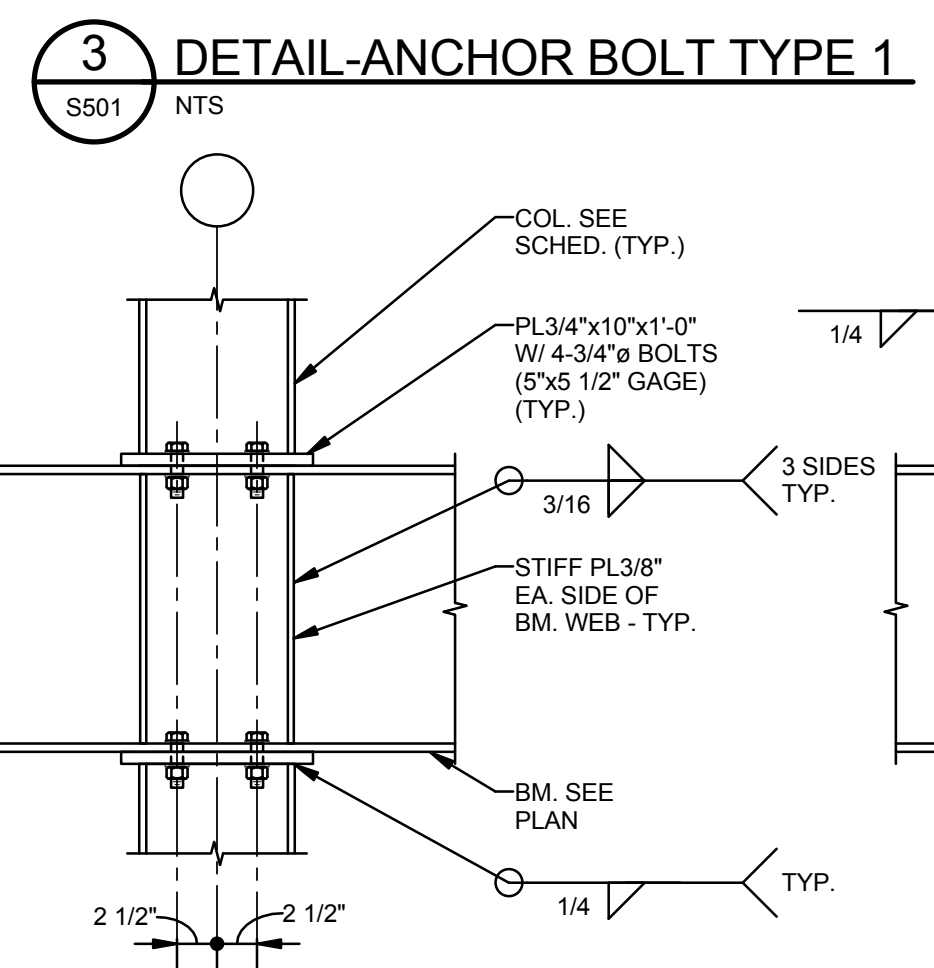
1 COLUMN SCHEDULE																						
NOTES: UNLESS NOTED OTHERWISE: 1. ▼ INDICATES MOMENT CONNECTION, SEE TYPICAL DETAILS.																						
COLUMN DESIGNATION	A-2	A-2.9 A-7 A-9	B-2 C-2 D-2	D-9	B-2.9 C-2.9	D-2.9 B-7 C-7	K-4 K-9	K-7	D-7	J-7	B-9	B-1 D-1 B-9.1	C-1	F-7 G-7	E-7 H-7	C-9	J-4 J-9	F-6 F-8 G-6 G-8	F-4 F-9 G-4 G-9	D-4 D-6.3 J-6.3 J-7.7	C-4 E-4 H-4 J-8.4 C-6.3 K-6.3 C-7.7 K-7.7 E-9 H-9 J-8.9	D-7.7
ROOF EL. VARIES, SEE PLAN																						
4TH FLOOR EL. 137'-0 1/2"				HSS6x6x5/16 ▼ 13/S501													10/S501 (SIM)					
3RD FLOOR EL. 124'-6 1/2"				W10x33 ▼ 8/S503	W10x33	W10x33 ▼ 8/S503 (@ D-2.9 ONLY)	W10x33	W10x33	W10x33	W10x33	W10x33	W10x33	W10x33	W10x33	W10x33	W10x33	W10x33	W10x33	W10x33	W10x33	W10x33	
2ND FLOOR EL. 112'-0 1/2"		W10x49		W10x33	W10x33	W10x33	W10x33	W10x33	W10x33	W10x33	W10x33	W10x33	W10x33	W10x33	W10x33	W10x33	W10x33	W10x33	W10x33	W10x33	W10x33	
1ST FLOOR EL. 100'-0"	W10x49 ▼ 8/S503		W10x33	W10x33	W10x33	W10x33	W10x33	W10x33	W10x33	W10x33	W10x33	W10x33	W10x33	W10x33	W10x33	W10x33	W10x33	W10x33	W10x33	W10x33	W10x33	
TOP OF PILE CAP EL. SEE PLAN																						
BASE PLATE	SEE 8/S501	SEE 8/S501	SEE 5/S501	SEE 5/S501	SEE 6/S501	SEE 6/S501	SEE 6/S501	SEE 6/S501	SEE 6/S501	SEE 5/S501	SEE 5/S501	SEE 10/S501	SEE 10/S501	SEE 9/S501	SEE 5/S501	SEE 5/S501	SEE 5/S501	SEE 7/S501	SEE 7/S501	SEE 8/S503	SEE 11/S501	
ANCHOR BOLTS	TYPE II	TYPE II	TYPE I	TYPE I	TYPE I	TYPE I	TYPE I	TYPE I	TYPE I	TYPE I	TYPE I	TYPE I	TYPE I	TYPE I	TYPE I	TYPE I	TYPE I	TYPE II	TYPE II			



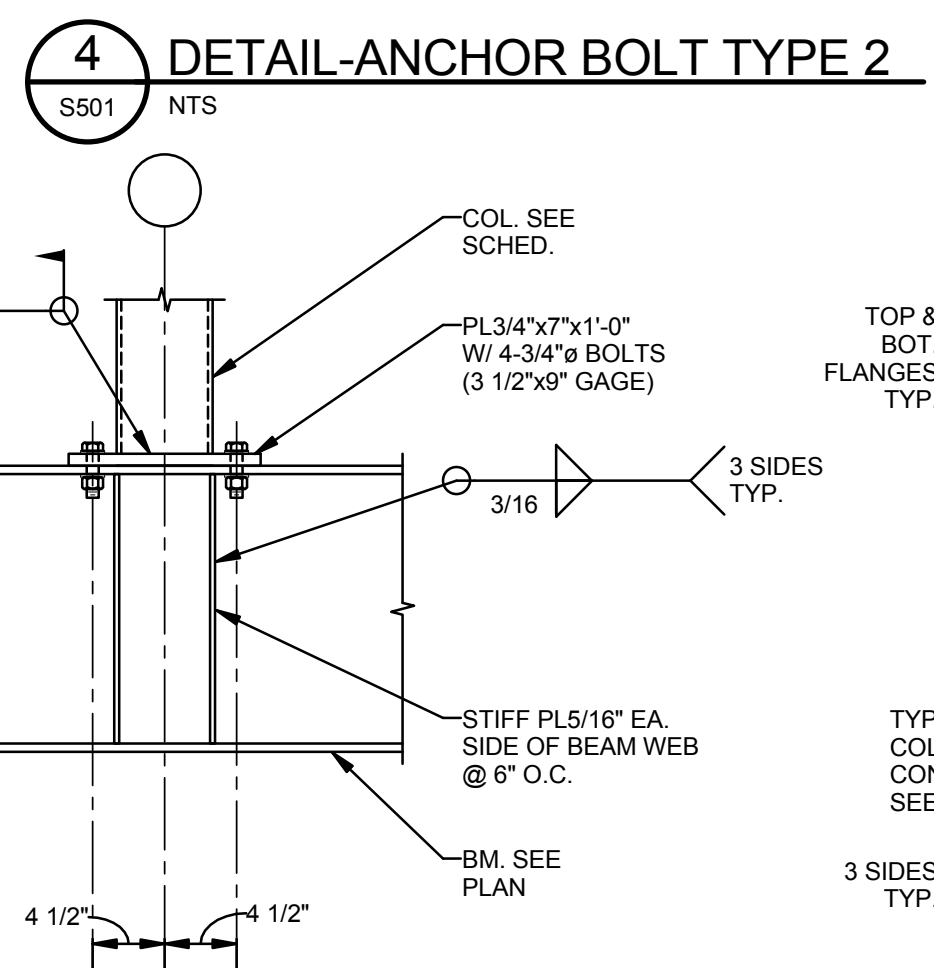
NOTES: UNLESS NOTED OTHERWISE:
1. ALL ANCHOR BOLTS ASTM F1554 GR 36.
2. PROVIDE LEVELING NUTS AS REQ'D TO SUPPORT BASEPLATE.
3. PROVIDE PLATE WASHER 1/4"x3"x3" AT ALL OVERSIZED HOLES.
4. TYPE I ANCHOR BOLTS MAY BE EMBEDDED INTO GRADE BEAMS ONLY.



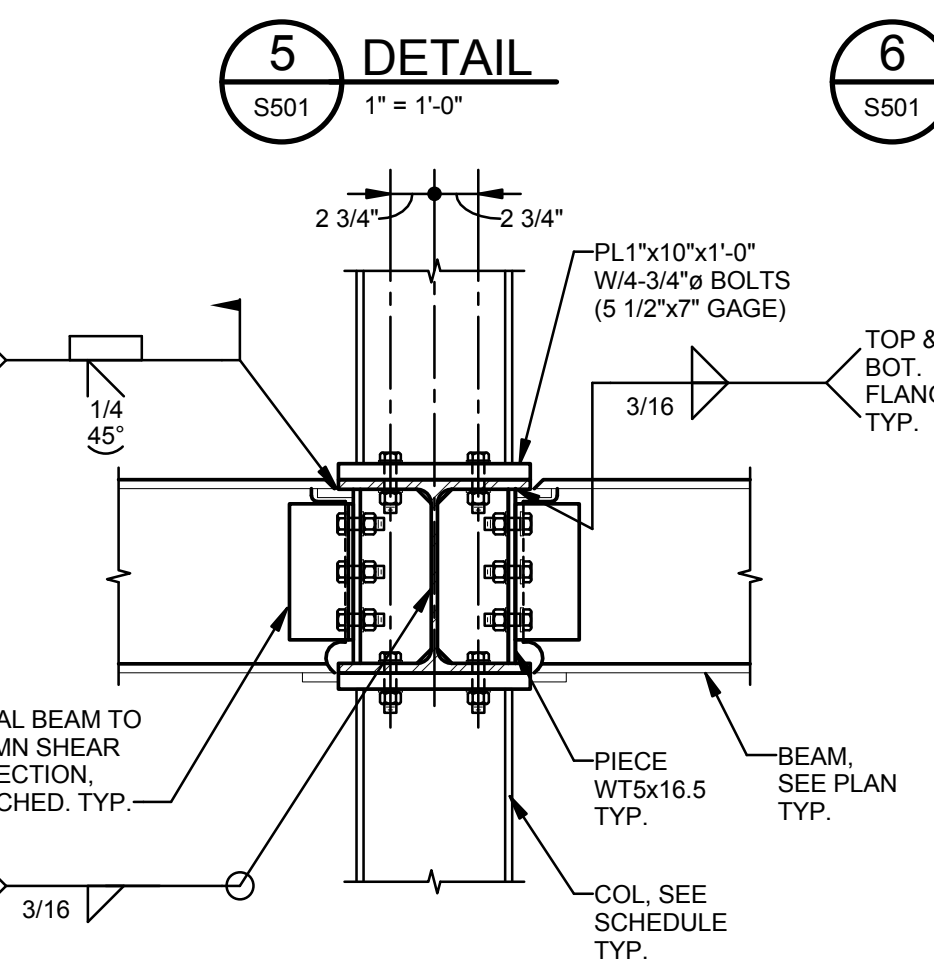
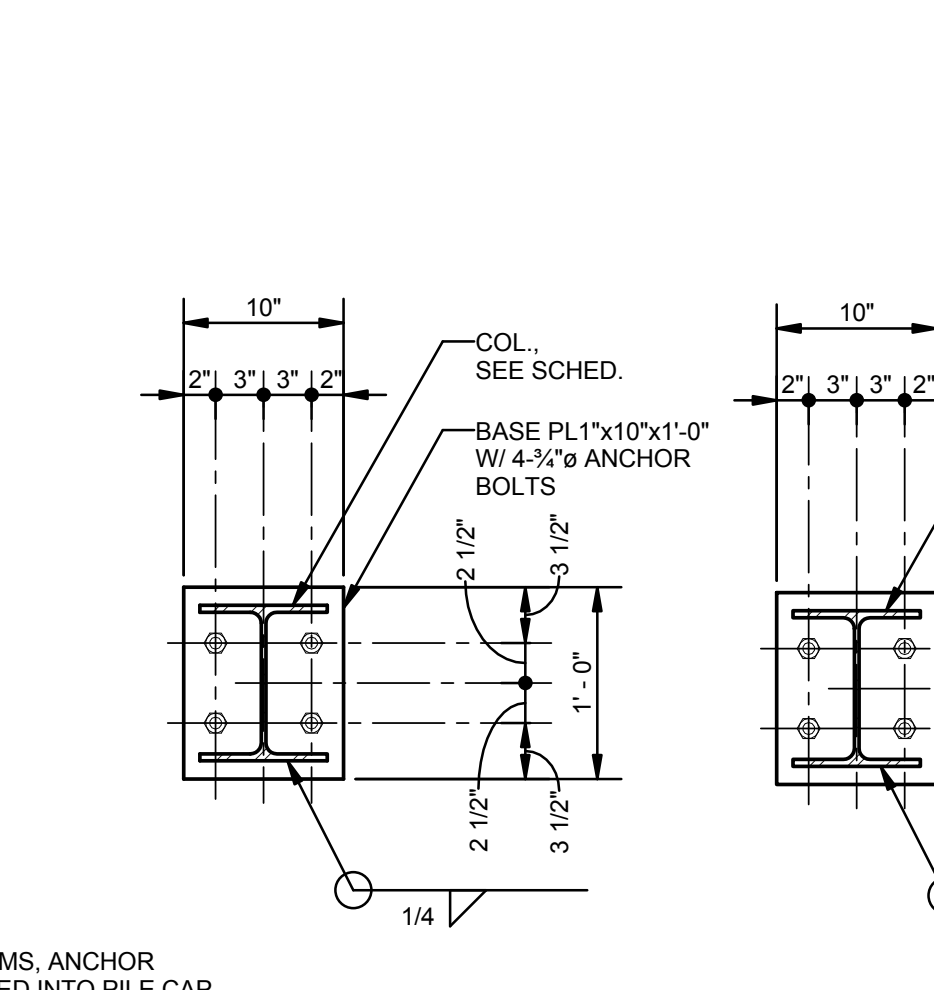
NOTES: UNLESS NOTED OTHERWISE:
1. ALL ANCHOR BOLTS ASTM F1554 GR 36.
2. PROVIDE LEVELING NUTS AS REQ'D TO SUPPORT BASEPLATE.
3. PROVIDE PLATE WASHER 1/4"x3"x3" AT ALL OVERSIZED HOLES.
4. WHERE COLUMNS WITH TYPE II ANCHOR BOLTS BEAR ON GRADE BEAMS, ANCHOR BOLTS SHALL EXTEND THROUGH GRADE BEAMS & BE FULLY EMBEDDED INTO PILE CAP.



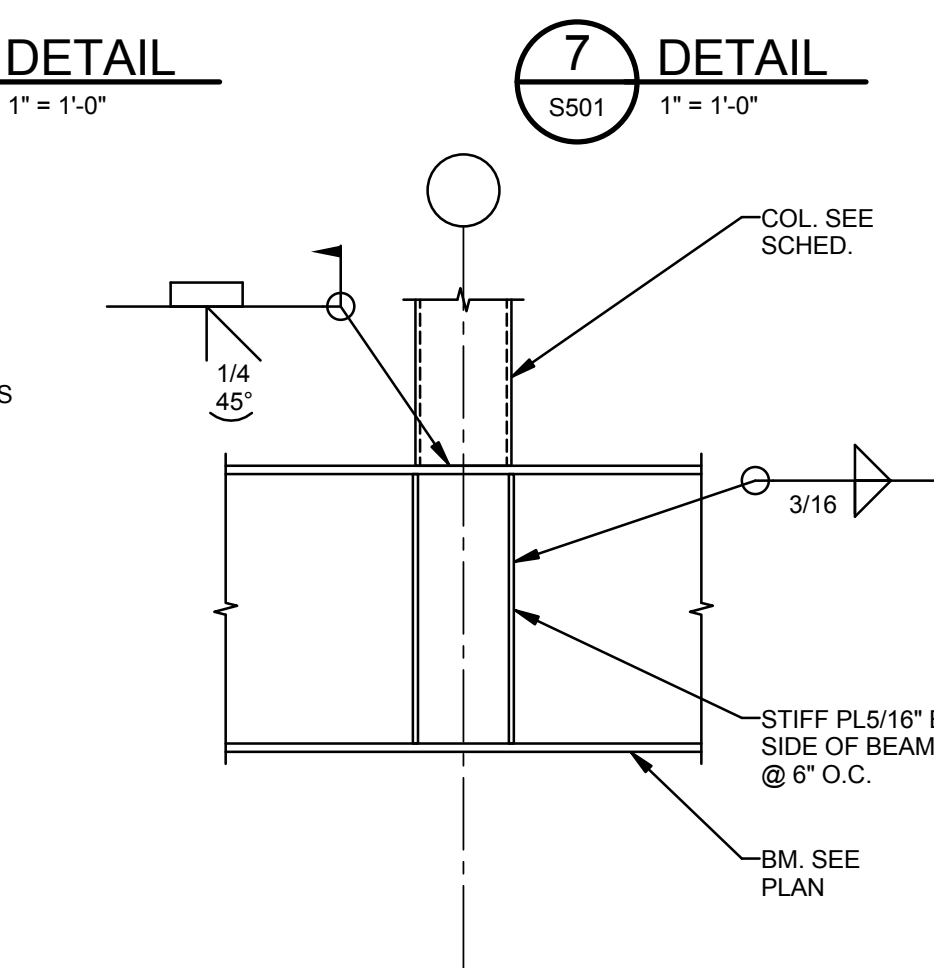
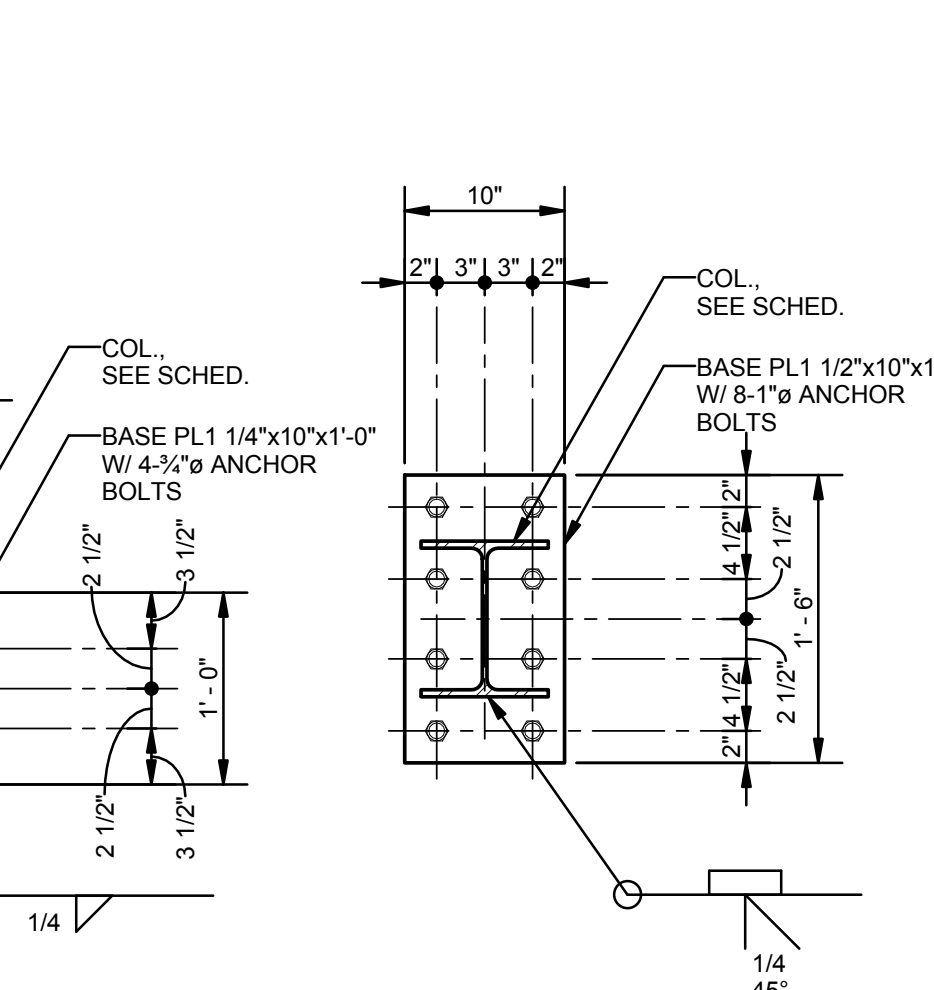
NOTES: UNLESS NOTED OTHERWISE:
1. COLUMN MAY NOT BE REQUIRED ABOVE OR BELOW BEAM, SEE PLANS AND SCHEDULE.



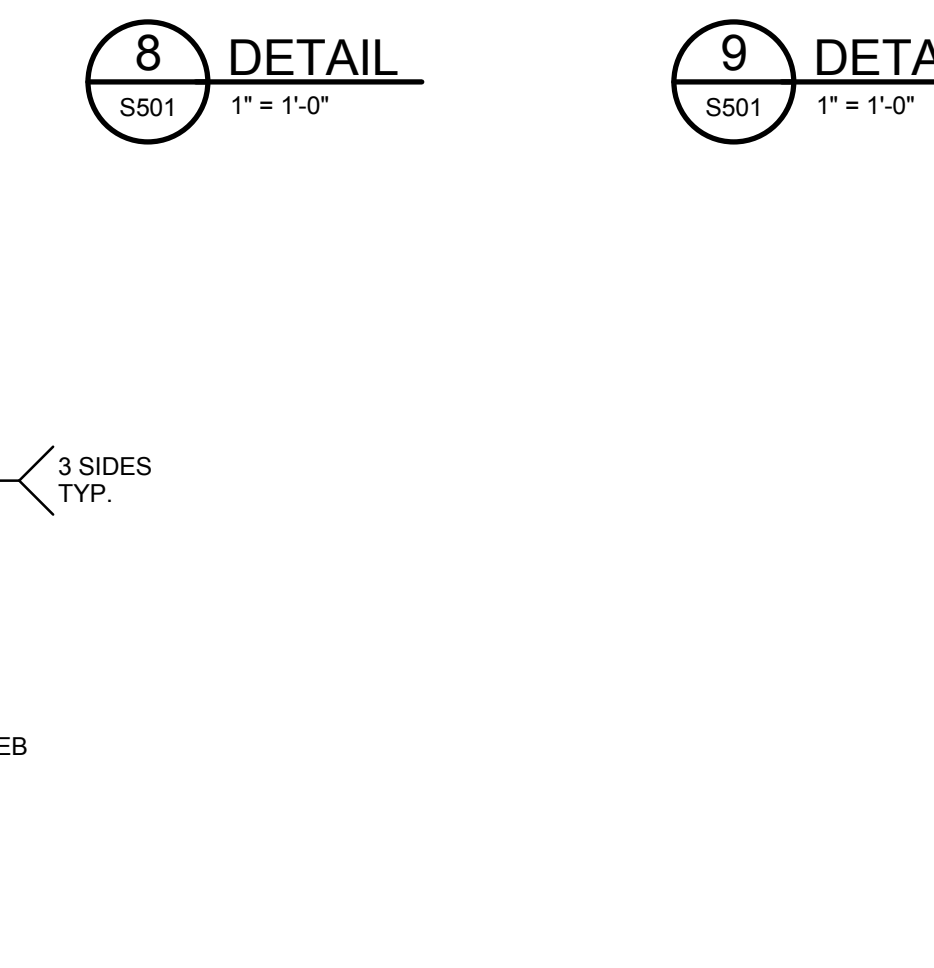
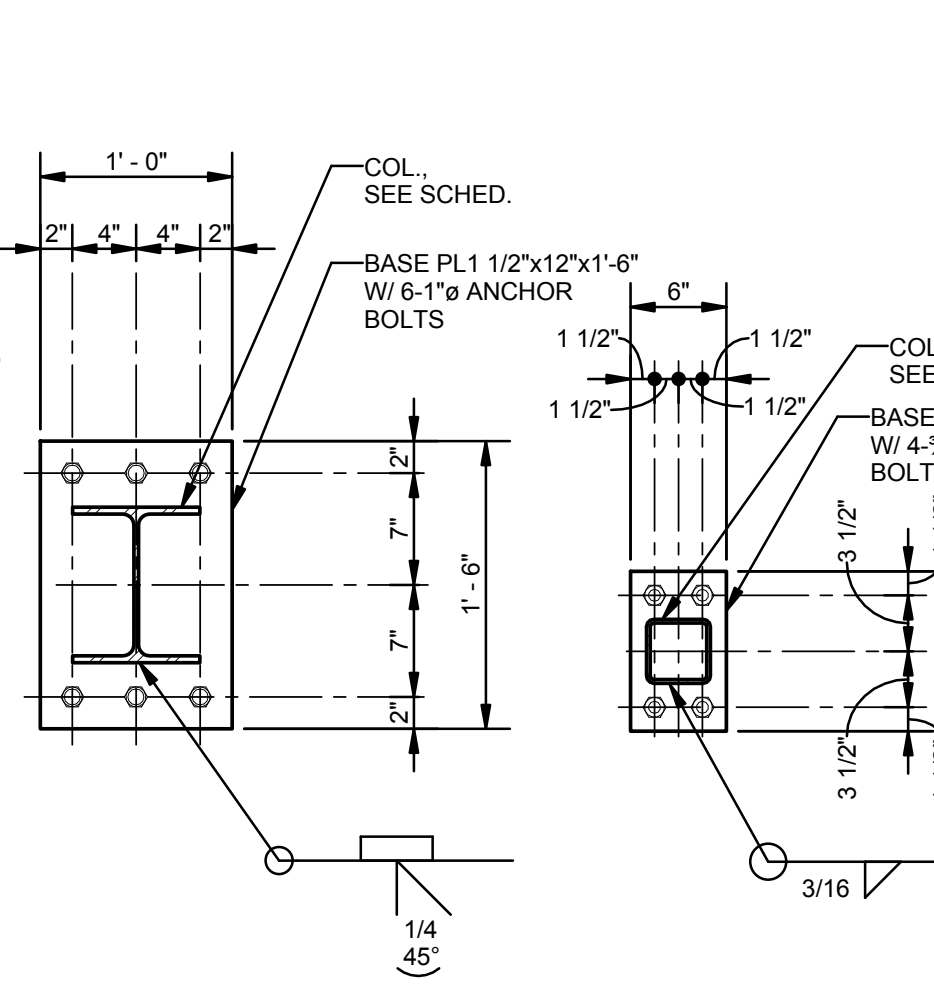
NOTES: UNLESS NOTED OTHERWISE:
1. COLUMN MAY NOT BE REQUIRED ABOVE OR BELOW BEAM, SEE PLANS AND SCHEDULE.



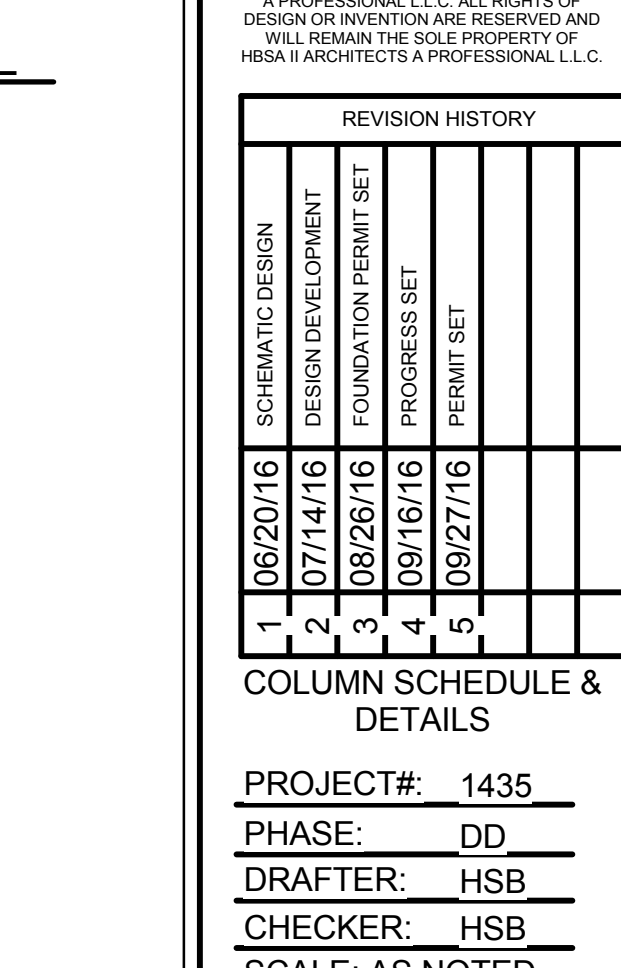
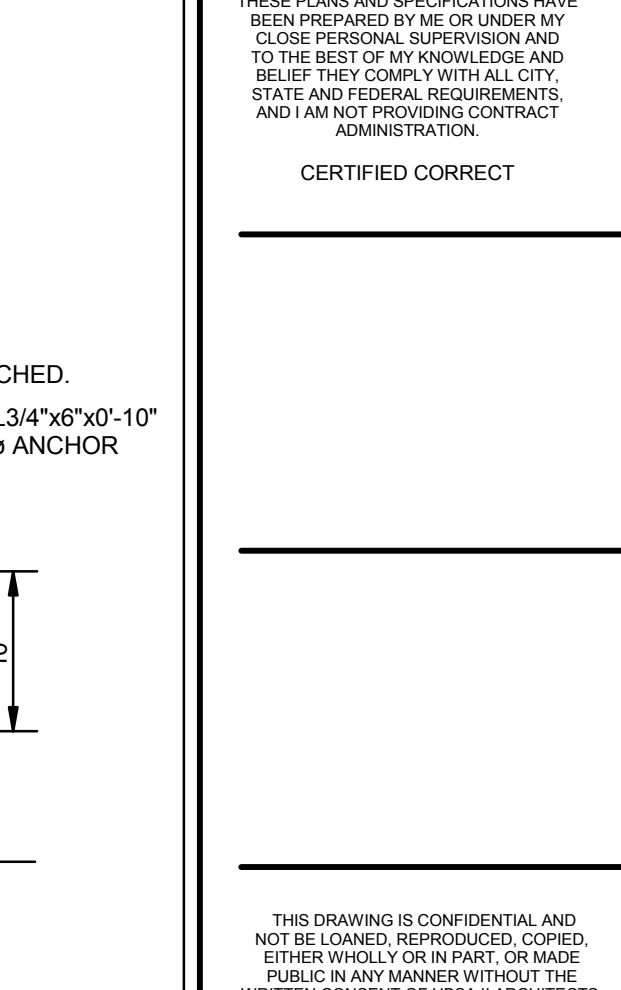
NOTES: UNLESS NOTED OTHERWISE:
1. COLUMN MAY NOT BE REQUIRED ABOVE OR BELOW BEAM, SEE PLANS AND SCHEDULE.



NOTES: UNLESS NOTED OTHERWISE:
1. COLUMN MAY NOT BE REQUIRED ABOVE OR BELOW BEAM, SEE PLANS AND SCHEDULE.



NOTES: UNLESS NOTED OTHERWISE:
1. COLUMN MAY NOT BE REQUIRED ABOVE OR BELOW BEAM, SEE PLANS AND SCHEDULE.



NOTES: UNLESS NOTED OTHERWISE:
1. COLUMN MAY NOT BE REQUIRED ABOVE OR BELOW BEAM, SEE PLANS AND SCHEDULE.

REVISION HISTORY				
NO.	DATE	DESCRIPTION	BY	CHKD
1	06/20/16	SCHEMATIC DESIGN		
2	07/14/16	DESIGN DEVELOPMENT		
3	08/26/16	FOUNDATION PERMIT SET		
4	09/16/16	PROGRESS SET		
5	09/27/16	PERMIT SET		

COLUMN SCHEDULE & DETAILS
PROJECT#: 1435
PHASE: DD
DRAFTER: HSB
CHECKER: HSB
SCALE: AS NOTED
ISSUED: 08-26-16
SHEET#: